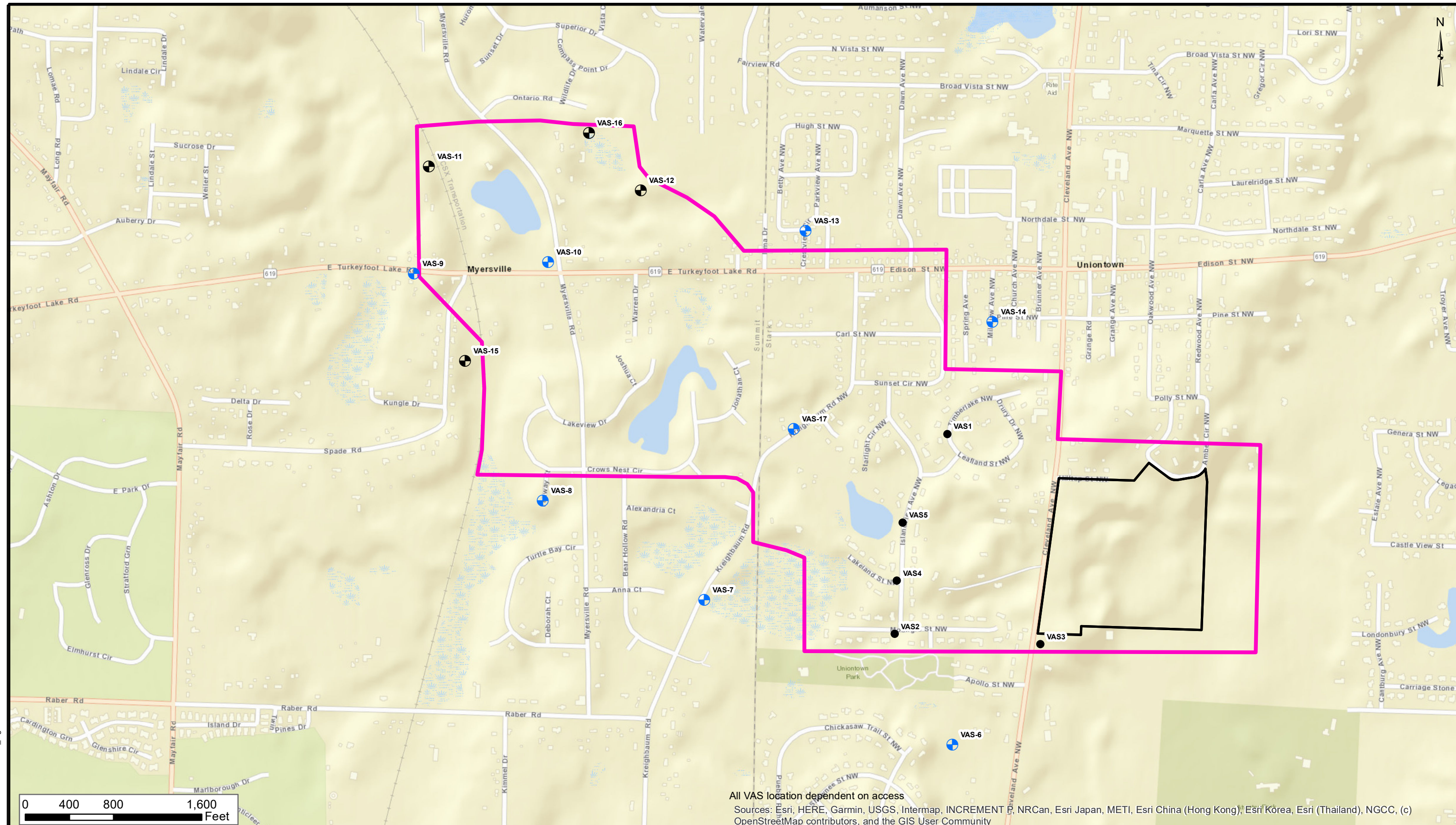


S:\Premier\Projects\BATO I\EL\2019\Revised GWM\GIS_Figure



All VAS location dependent on access
 Sources: Esri, HERE, Garmin, USGS, Intermap, INCREMENT P, NRCan, Esri Japan, METI, Esri China (Hong Kong), Esri Korea, Esri (Thailand), NGCC, (c) OpenStreetMap contributors, and the GIS User Community

Legend

- ⊕ Proposed VAS Locations being in the ROW
- ⊕ Proposed VAS Locations not in the ROW
- Completed VAS Locations
- EPA Focused Area
- Site
- VAS - Vertical Aquifer Sampling

INDUSTRIAL EXCESS LANDFILL
 12646 Cleveland Avenue
 Uniontown, Ohio
 PROJECT NO. EC02.20110001.21.000



1880 West Oak Pkwy, Building 100, Suite 106
Marietta, GA 30062
(770)973-2100

2023 Groundwater Sampling Locations			
DRAWN SWS	CHECKED	DATE MAY 2023	FIGURE 2